

Nutrition

	per 100g
Energy	1070kJ/253kcal
Fat	4.8g
of which Saturates	0.8g
Carbohydrate	44g
of which Sugars	3.0g
Fibre	1.6g
Protein	7.9g
Salt	1.0g

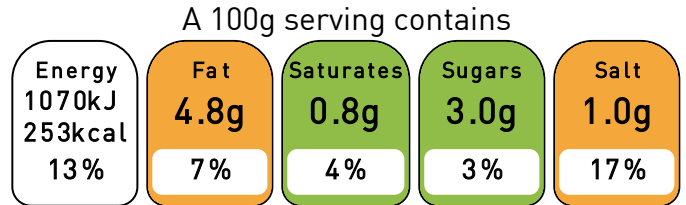
Ingredient Declaration

WHEAT Flour, Water, SESAME Seeds (4%), Sugar, Sunflower Oil, Salt, Yeast (Saccharomyces Cerevisiae, Emulsifier: E491), Flour Treatment Agent E300, Enzymes [WHEAT], Enzyme (Amylase) [WHEAT], Preservative: Calcium Propionate E282

Allergens

- Contains Gluten !
- Contains Wheat !
- Contains Sesame !

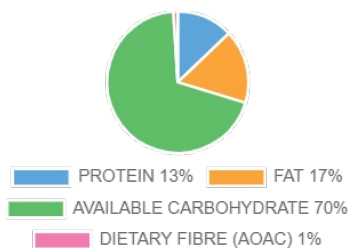
Front of Pack



of an adult's reference intake

Typical values per 100g: 1070kJ/253kcal

Energy Contributions



EU Reference Intakes

Per 100g		RI Quantity	% RI
Energy	kJ	8400	1070 13%
Total Fat	g	70.0	4.8 7%
Saturates	g	20.0	0.8 4%
Carbohydrate	g	260.0	43.9 17%
Sugars	g	90.0	3.0 3%
Protein	g	50.0	7.9 16%
Salt	g	6.0	1.0 17%