

## Nutrition

	per 100g
Energy	1379kJ/331kcal
Fat	20g
of which Saturates	4.5g
Carbohydrate	33g
of which Sugars	17g
Fibre	0.8g
Protein	4.7g
Salt	0.92g

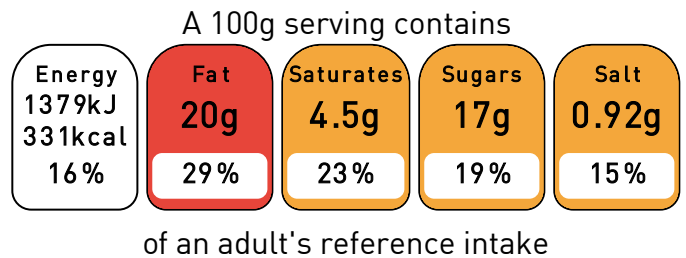
## Ingredient Declaration

Cake Mix (WHEAT Flour, Sugar, Whole EGG Powder, WHEAT Starch, Maltodextrin, Lactose, Raising Agents E450, E500; Salt, Flavorings) [MILK], Water, Cream (Water, Fully Hydrogenated Vegetable Oils And Fats [26.5%] [Fats [Palm Kernel]], Oils [Rapeseed And Sunflower And Maize And Soybean In Varying Proportions], Sugar, Stabilizers [E420ii, E463], MILK Proteins, Emulsifiers [E472e, E322 Soy Lecithin], Salt, Flavorings, Color [Beta-Carotene]), Sunflower Oil, Custard Powder (Sugar, Modified Potato Starch, Whey Powder, Glucose Syrup, Hydrogenated Vegetable Oil [Palm, Coconut], Emulsifiers [E172, E472a, E472b], Thickener [E401, E407, E412], MILK Protein [Sodium Caseinate], Preservative [E200], Colorant [E160a], Stabilizer [E340], Flavoring [Cream]), Additive (Sugar, Dextrose, Bovine Gelatin, Skimmed Milk Powder, Modified Starch), Baking Powder (Corn Starch, Sodium Bicarbonate [E500ii], Sodium Acid Pyrophosphate [E450a]) [WHEAT], Cocoa Powder, Colour: Ponceau Red E124, Blueberry Flavoring

## Allergens

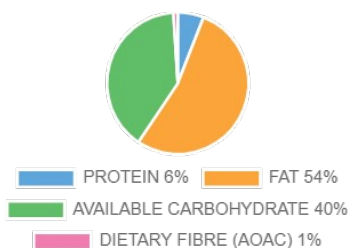
- Contains Gluten
- Contains Wheat
- Contains Eggs
- Contains Milk
- Suitable for Vegetarians

## Front of Pack



Typical values per 100g: 1379kJ/331kcal

## Energy Contributions



## EU Reference Intakes

Per 100g		RI Quantity	% RI	
Energy	kJ	8400	1379	16%
Total Fat	g	70.0	20.0	29%
Saturates	g	20.0	4.5	23%
Carbohydrate	g	260.0	32.7	13%
Sugars	g	90.0	17.0	19%
Protein	g	50.0	4.7	9%
Salt	g	6.0	0.92	15%